

# Low Pressure Loss / High Accuracy Filtration Ceramic Gas Filter



## High Accuracy Filtration / Low Pressure Loss

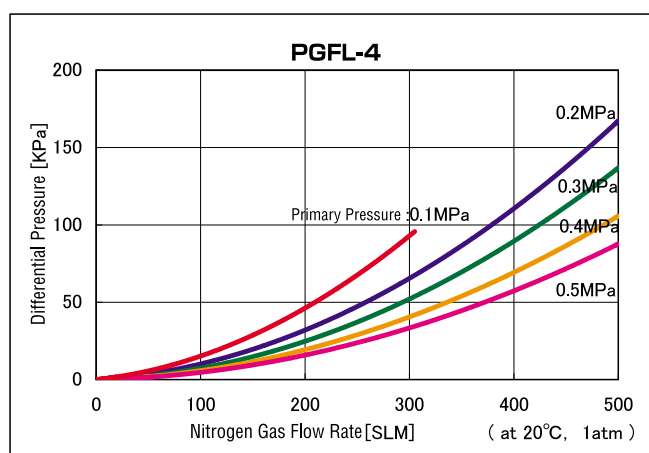
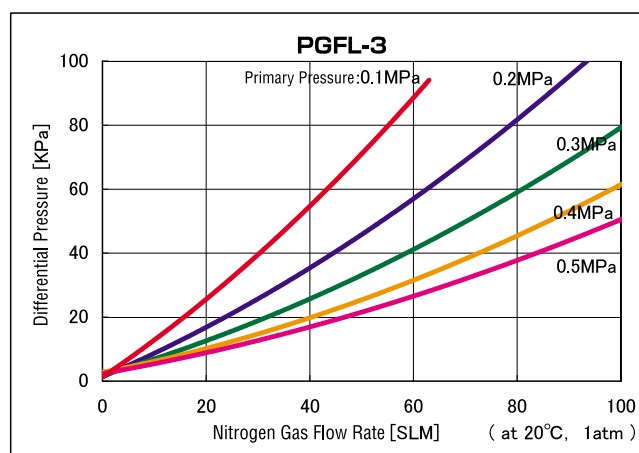
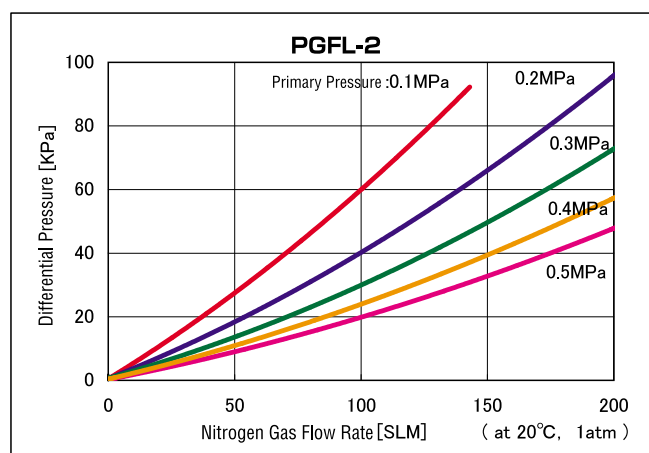
- Low pressure loss is realized keeping high efficiency filtration of PGF series. Flow rate can be approximately doubled in the same dimensions as PGF series.

## Specification

Filtration Accuracy	0.003 $\mu$ m (however, it is 0.1 $\mu$ m at purified water filtration)
Recommended Flow Rate	20 to 400L/min (refer to flow rate characteristic curve for each model)
Max. Operating Pressure	17MPa (2,465PSIG) at 20°C    16.5MPa (2,392PSIG) at 120°C
Max. Allowable Differential Pressure	9.6MPa (1,392PSIG) at 20°C
Max. Continuous Operating Temperature	120°C
Baking Temperature	200°C
External Leakage	$2 \times 10^{-11}$ Pa · m <sup>3</sup> /sec or less
Materials	Housing: SUS316L    Roughness: Rmax 0.7 $\mu$ m or less Element: Alumina ceramics (Al <sub>2</sub> O <sub>3</sub> )    Seal: PTFE
Joint	1/4", 3/8", 1/2", 3/4"    VCR®, Swagelok®, UPG®, and others

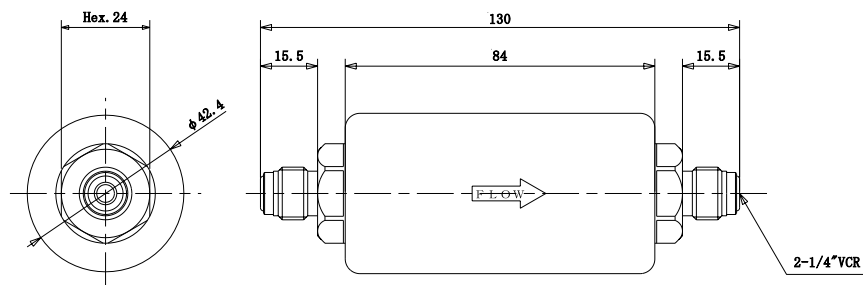
Ceramic  
Gas Filter

## Flow Rate Characteristics

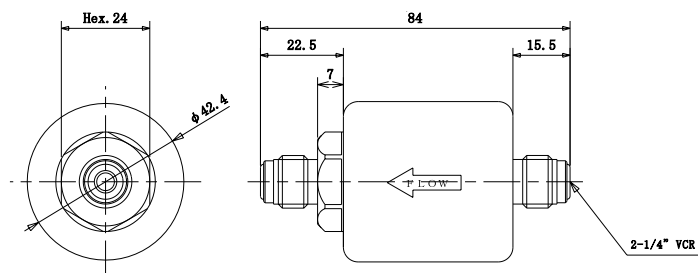


## Dimensional Outline Drawings

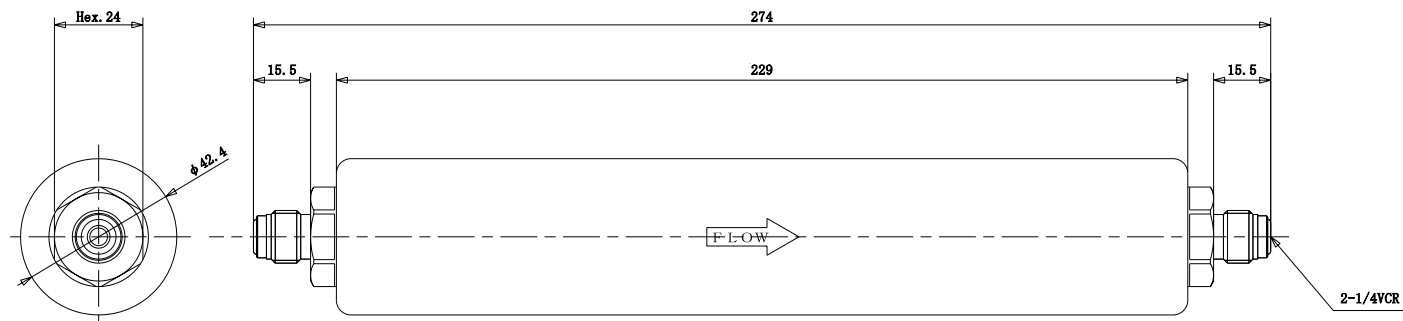
PGFL-2-02VR•PC07



PGFL-3-02VR•PC07



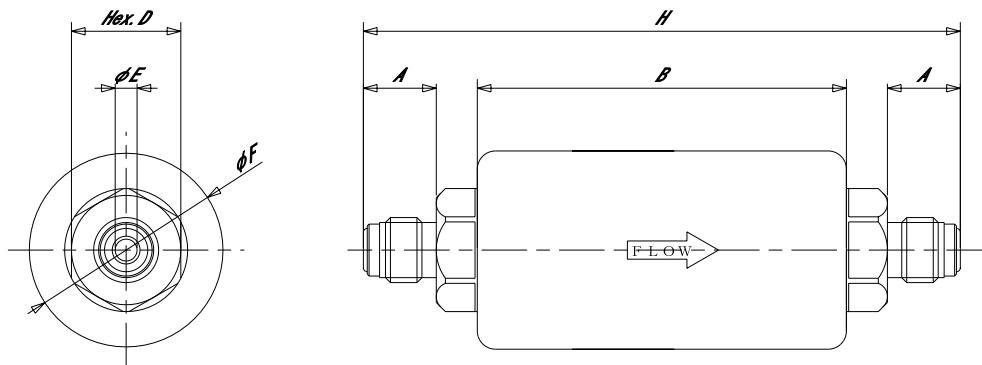
PGFL-4-02VR•PC07



## Dimensions

Model	A(mm)	B(mm)	D(mm)	E(inch)	F(mm)	H(mm)
PGFL-2-02VR・PC07	15.5	84.0	Hex.24	1/4	φ42.4	130.0
PGFL-2-02SW・PC07	10.0	84.0	Hex.24	1/4	φ42.4	119.0
PGFL-2-03VR・PC07	19.0	92.0	Hex.24	3/8	φ42.4	146.0
PGFL-2-03SW・PC07	12.0	92.0	Hex.24	3/8	φ42.4	131.0
PGFL-3-02VR・PC07	15.5	46.0	Hex.24	1/4	φ42.4	84.0
PGFL-3-02SW・PC07	10.0	46.0	Hex.24	1/4	φ42.4	73.0
PGFL-3-03VR・PC07	19.0	48.4	Hex.24	3/8	φ42.4	112.0
PGFL-4-02VR・PC07	15.5	229.0	Hex.24	1/4	φ42.4	274.0
PGFL-4-03VR・PC07	19.0	230.0	Hex.24	3/8	φ42.4	284.0

Ceramic  
Gas Filter



## Options

- Filter baking: 200°C, 2 hours
- Metal cap
- For ultra large flow rate 500 to 3,000L/min, PGF-11 type is available.

## How to Order

**PGFL** - **2** - **02** **VR** • **PC07**

Type      Bore Diameter      Type of Joint      Roughness Degree of Inner Face

Indication of Flow Rate

2 : 80 to 160SLM 3 : 20 to 80SLM 4 : 160 to 400SLM	02 : 1/4" 03 : 3/8" 04 : 1/2" 06 : 3/4"	VR : VCR® SW : Swagelok® UP : UPG® For other joints, please contact us.	R max 0.7μm (Option : R max. 0.2μm) : PC02
--	--	---	---

※Specification is subject to change without notice.