

Low Pressure Loss Metal Gas Filter



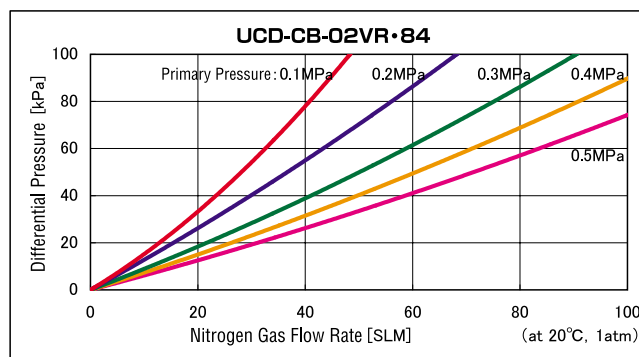
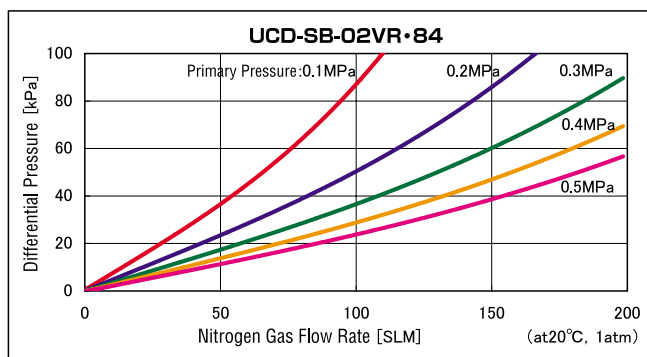
- SUS316L used for constructional material of filter, realizing high heat resistance with little possibility of corrosion or secondary material generation.
- Out side pressure loss of $\Delta 0.05\text{MPa}$ when 0.2MPa nitrogen gas (N_2) flow pressure applied on IN side realizing 90SLM flow rate.
- Filtration accuracy $0.003\mu\text{m}$ checked by CNC counter under constant and pulsation flows realizing significant improvement in yield in sub micron ULSI production.

Specification

Filtration Accuracy	0.003 μ m
Recommended Flow Rate	10 to 100L/min (refer to flow rate characteristic curve for each model)
Max. Operating Pressure	0.98MPa (142PSIG) at 20°C 0.94MPa (136PSIG) at 120°C
Max. Allowable Differential Pressure	0.7MPa (101.5PSIG) at 20°C
Max. Operating Temperature	460°C
External Leakage	2×10^{-11} Pa \cdot m ³ /sec or less
Materials	Housing: SUS316L (Electrochemical polishing), Element: SUS316L, Roughness: Rmax0.7 μ m or less
Joint	1/4" VCR®, and others

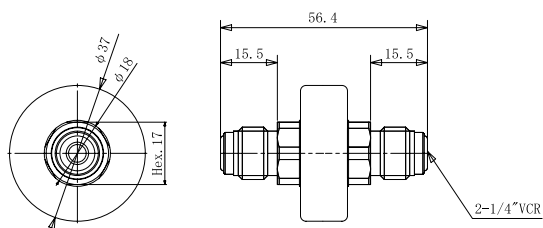
Metal
Gas Filter

Flow Rate Characteristics

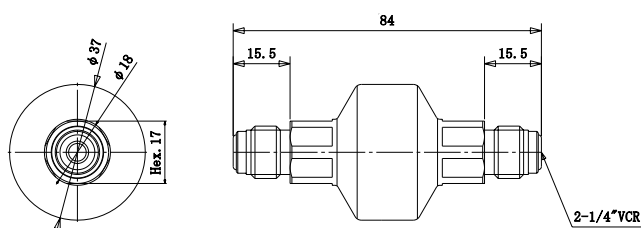


Dimensional Outline Drawings

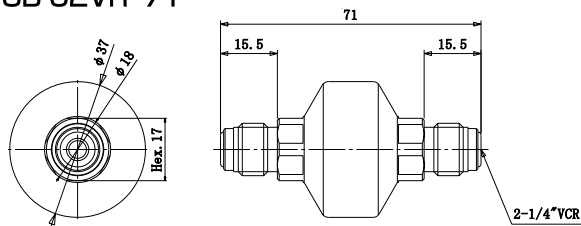
UCD-SB-02VR-56.4



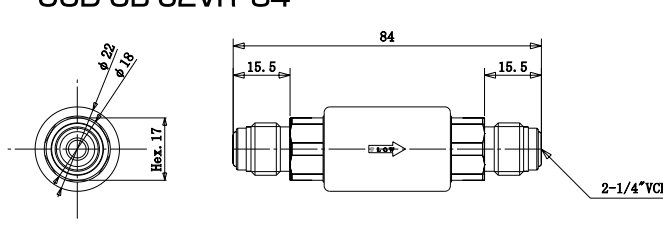
UCD-SB-02VR-84



UCD-SB-02VR-71



UCD-CB-02VR-84



How to Order

Flow Rate Type of Joint Size Between Planes
UCD - S B - 02 VR • 71

S : 20 to 100LPM
 C : 10LPM

VR : VCR®
 For other joints,
 please contact us.

56.4 : 56.4mm
 71 : 71mm
 84 : 84mm
 ※Flow rate C type is 84 only.

※Specification is subject to change without notice.